

4 - BEDROOM

TYPE D1-P

148 sq m/ 1593 sq ft

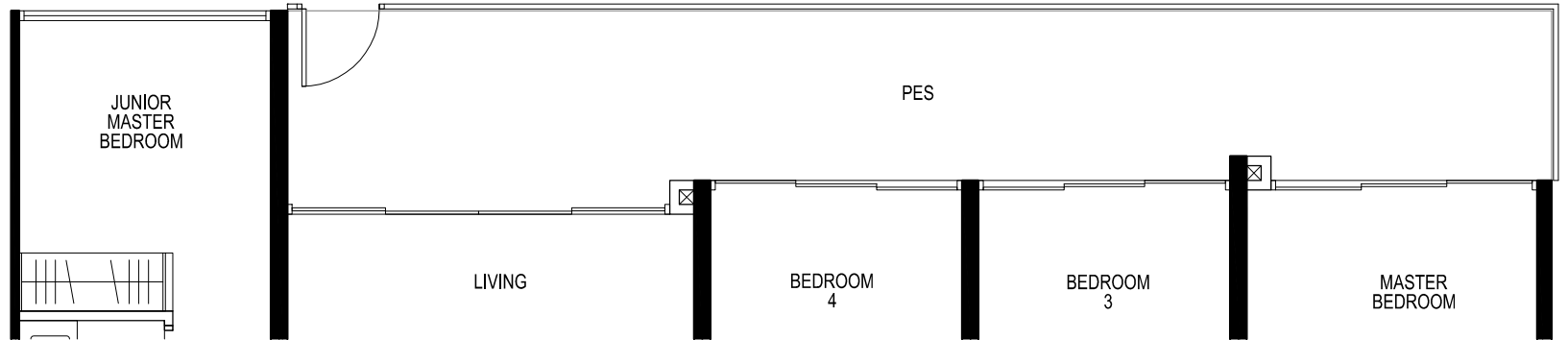
INCLUSIVE OF 25 SQM PES & 6 SQM A/C LEDGE

CEILING HEIGHT AT LIVING / DINING,
AND BEDROOM IS APPROXIMATELY 4.3 M

TOWER 11E

UNIT

#01-22



4 - BEDROOM

TYPE D1

138 sq m/ 1485 sq ft

INCLUSIVE OF 14 SQM BALCONY & 6 SQM A/C LEDGE

5TH STOREY ONLY: CEILING HEIGHT AT LIVING / DINING,
AND BEDROOM IS APPROXIMATELY 4.3 M

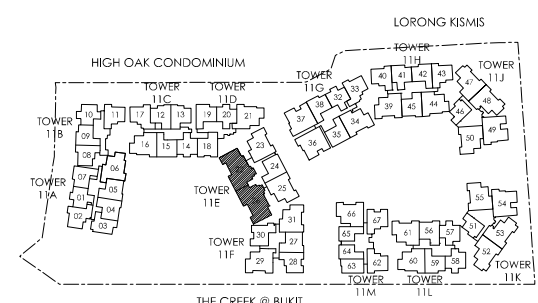
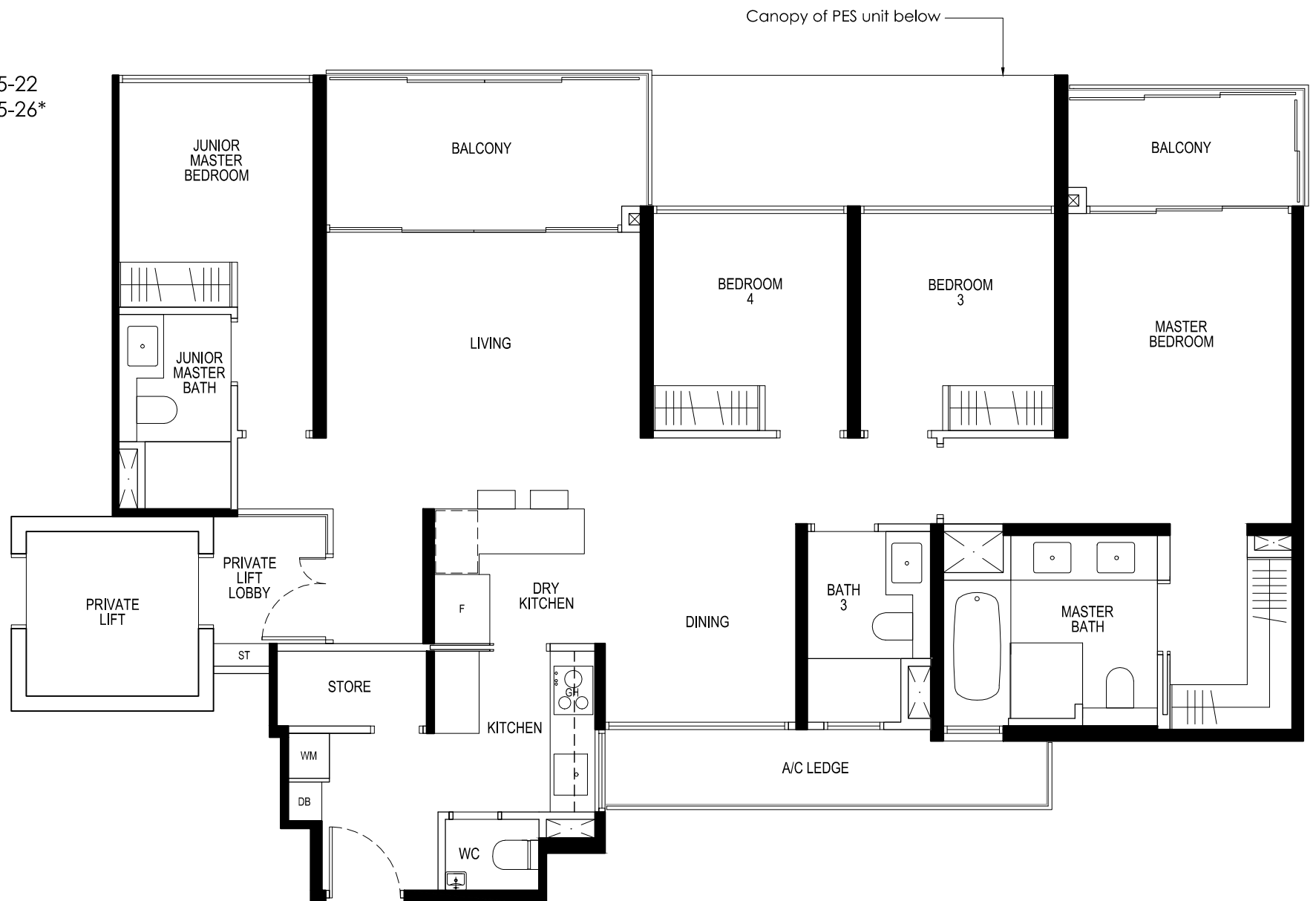
TOWER 11E

UNIT

#02-22 TO #05-22

#02-26 TO #05-26*

*MIRROR IMAGE



KEY PLAN

LEGEND:

- | | | |
|-----------------------|-------------------------|------------------------------|
| F - FRIDGE | GH - GAS HOB | WC - WATER CLOSET |
| WM - WASHER CUM DRYER | ST - STORAGE | A/C - AIR CONDITIONER |
| IH - INDUCTION HOB | DB - DISTRIBUTION BOARD | PES - PRIVATE ENCLOSED SPACE |

AREA INCLUDES A/C LEDGE, BALCONY, PES AND VOID AREA WHERE APPLICABLE. SOME UNITS ARE MIRROR IMAGES OF THE APARTMENT PLANS SHOWN IN THE BROCHURE. PLEASE REFER TO KEY PLANS FOR ORIENTATION. ALL PLANS ARE SUBJECT TO CHANGE AS MAY BE APPROVED BY THE RELEVANT AUTHORITIES. ALL FLOOR AREAS ARE APPROXIMATE MEASUREMENTS ONLY AND ARE SUBJECT TO FINAL SURVEY. BP APPROVAL NO. A1839-00012-2017-BP01 DATED 14/06/2018