

# 2 - BEDROOM

## TYPE B4a-P

66 sq m/ 710 sq ft

INCLUSIVE OF 6 SQM PES & 3 SQM A/C LEDGE

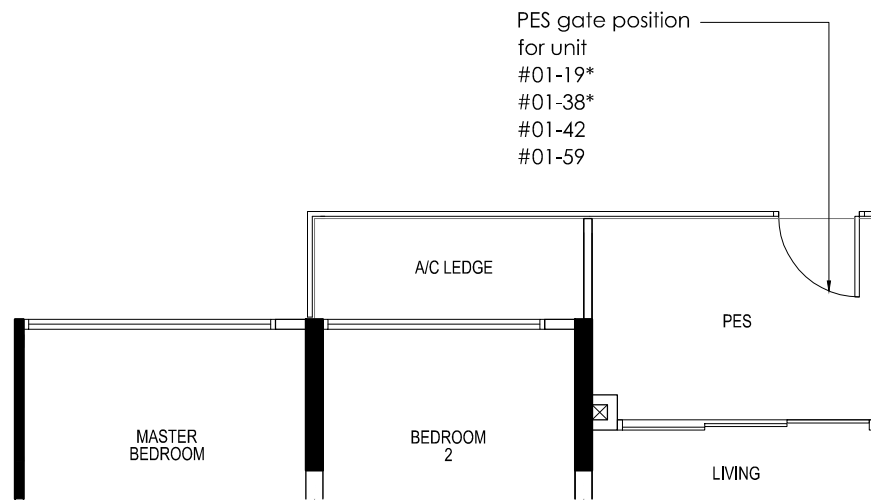
CEILING HEIGHT AT LIVING / DINING,  
AND BEDROOM IS APPROXIMATELY 4.3 M

TOWER 11B, 11D, 11G, 11H & 11L

UNIT

- #01-09\*
- #01-19\*
- #01-38\*
- #01-42
- #01-59

\*MIRROR IMAGE



# 2 - BEDROOM

## TYPE B4a

66 sq m/ 710 sq ft

INCLUSIVE OF 6 SQM BALCONY & 3 SQM A/C LEDGE

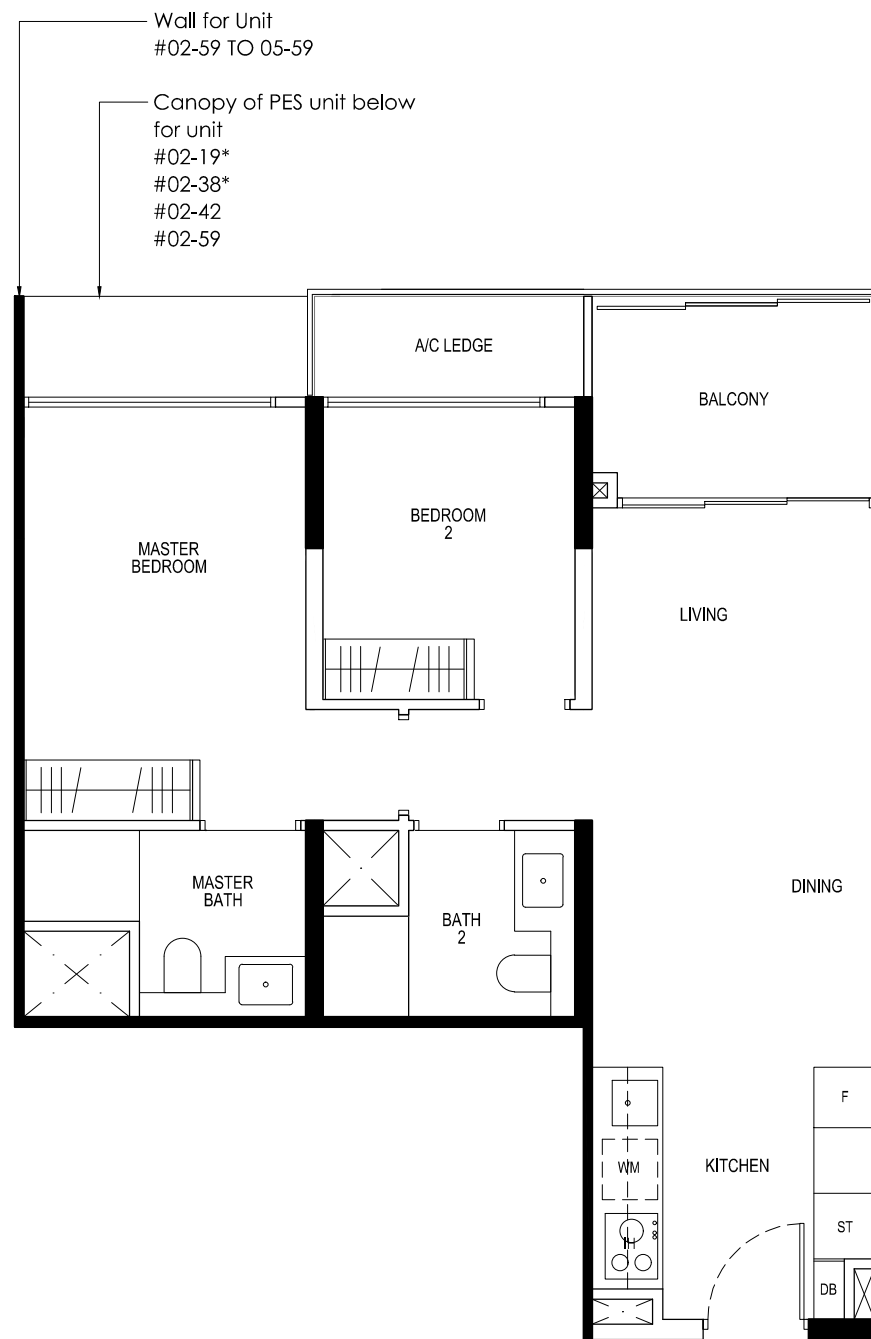
5TH STOREY ONLY: CEILING HEIGHT AT LIVING / DINING,  
AND BEDROOM IS APPROXIMATELY 4.3 M

TOWER 11A, 11B, 11D, 11G, 11H & 11L

UNIT

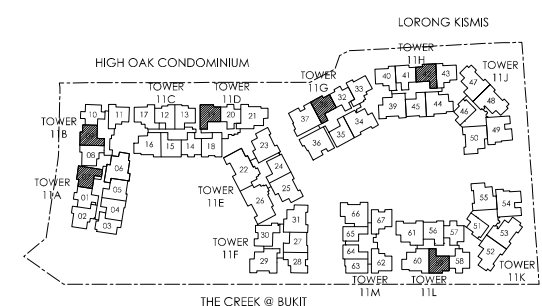
- #03-07 TO #05-07
- #02-09 TO #05-09\*
- #02-19 TO #05-19\*
- #02-38 TO #05-38\*
- #02-42 TO #05-42
- #02-59 TO #05-59

\*MIRROR IMAGE



LEGEND:

- |                       |                         |                              |
|-----------------------|-------------------------|------------------------------|
| F - FRIDGE            | GH - GAS HOB            | WC - WATER CLOSET            |
| WM - WASHER CUM DRYER | ST - STORAGE            | A/C - AIR CONDITIONER        |
| IH - INDUCTION HOB    | DB - DISTRIBUTION BOARD | PES - PRIVATE ENCLOSED SPACE |



KEY PLAN